

Preempting Disaster: Economic Hardship Affecting Health Care in a Small Midwestern Town

**University of Illinois
College of Medicine at Rockford**



Galesburg Illinois

- Population 33,530
- County seat of Knox County
- Largest community in Western Illinois
- A trade, rail, and industrial center. It has rail shops and plants that manufacture farm buildings, paint, plastics, and refrigerators.

Maytag Refrigerators

- Headquartered in Newton, IA.
- Produces products under brand names Maytag, Amana, Jenn-Air, Magic Chef, and Hoover.
- Operated plant in Galesburg since 1951.
- Employs 1,600 workers or 1/10 of adult workforce in Galesburg.
- Announced in October 2002 that plant would close in Fall 2004 and plant would be moved to Reynosa, Mexico.

Public Health Department Proactive Planning

- Establishing the Community Care Clinic
- Developing a needs assessment survey for Maytag employees
- Collaborating with Whiteside and Macon counties
- Appointing a representative on the Mayor's Task Force to advocate for health care issues

OSF Saint Mary's Proactive Planning

- Stronger commitment to Knox County Health Department's community care clinic
- Expanding the current Emergency Department
- Adding radiology technician and CNA positions in cooperation with local college

United Way/Social Services

- Has seen a 28% increase in clients served in last six months
- Organizing the “Community Service Team Member” project- where private citizens are trained to help their peers
- Partnered with the IAM Local 2063 to establish a transition center which provides aid for emergency food and shelter

Carl Sandburg College Initiative

- Adding courses related to Allied Health fields
- Adding courses related to Physical Education/Recreation fields
- Increasing number of advisory staff to help new students decide what classes to take
- Collaborating with Western Illinois University to offer four year degrees
- Shifting focus away from training students for labor positions

City of Galesburg's Plan

- Created the Mayor's Task Force
 - A six person committee created to assess the communities needs concerning:
 - Community Impact
 - Health, social services, and religion
 - Education
 - Maytag facility
 - Regional Growth
 - Political
 - Employee Benefits and Training

Regional Growth

- In conjunction with the Galesburg Regional Economic Development Association, the City is trying to attract/promote:
 - Long term health care facilities
 - Small Business developments
 - Tourism
 - Agricultural businesses
 - Burlington Northern/Sante Fe associates

Rural Economic Technical Assistance Center “ripple effect” study.

***statistics calculated through Implan formula**

- 3,631 fewer jobs in Knox County

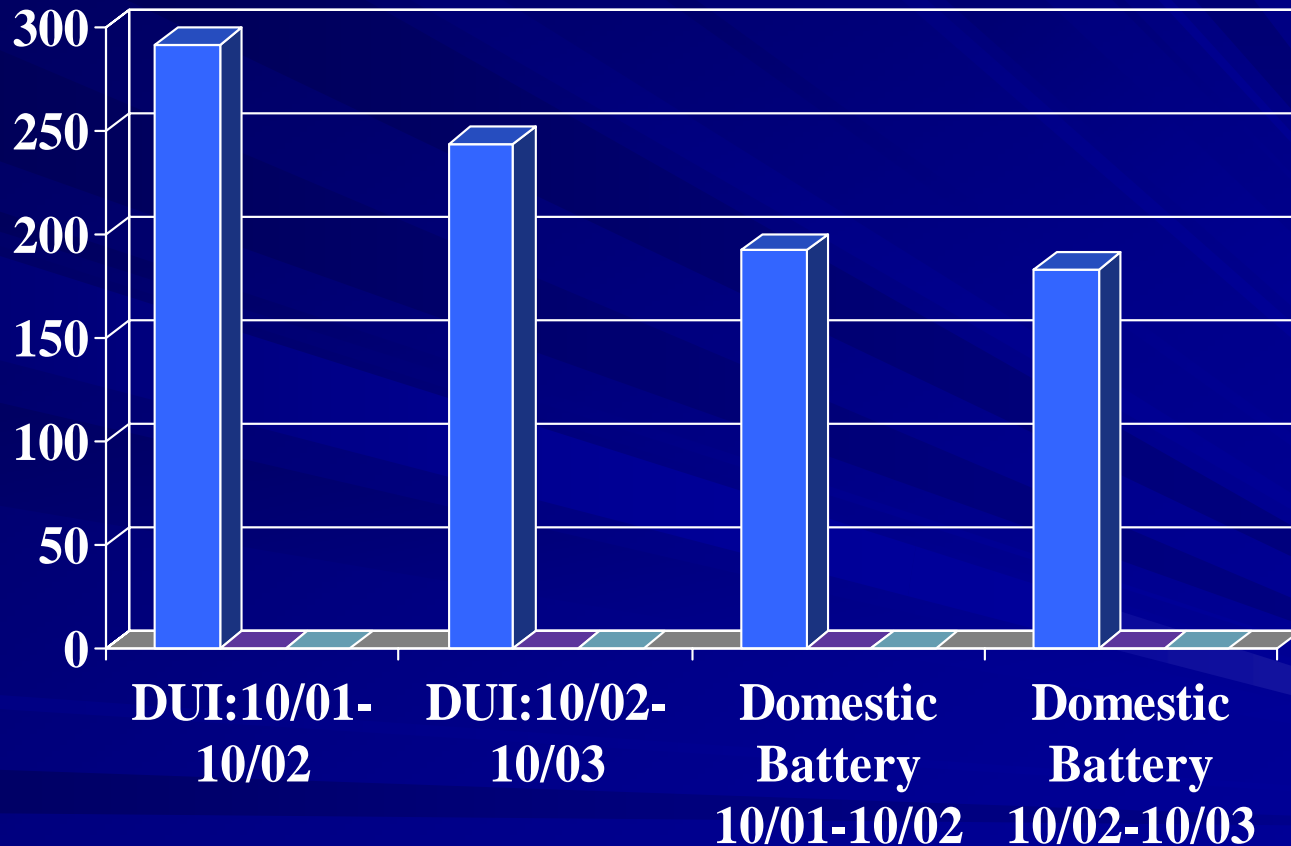
- 1,600 directly
- 575 indirectly
- 1,475 through “induced effects”

- \$111 million dollars/year lost in payroll

- Lost employment through ripple effect

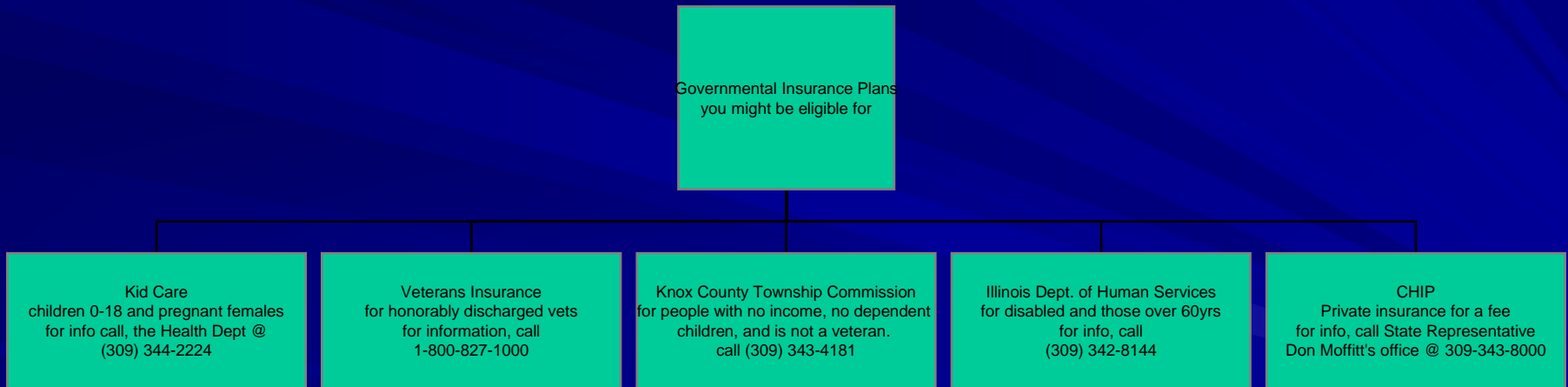
- Wholesale trade: 176
- Education: 157
- Government: 109
- Hospital: 77
- Doctors/Dentist: 48
- Nursing: 37
- Domestic service: 24

DUI/Domestic Battery Arrest



Have You Lost Your Insurance?

1. Talk to your medical provider to ask about existing bills and payment options
2. Find out if your spouse has insurance that you can become covered under
3. If you need more options, there are governmental plans and local resources available to assist you.



Local Resources for Low-Cost Medical Care

